



MAGGIE SOTTERO®

fall 2023

Abrienna 23MB606A01

MAGGIE SOTTERO®

personalize it!
FOR YOUR LOVE STORY



23MB606A01, IV BLS/IV
Size 6



23MB606A01, IV BLS/IV



23MB606A01, IV BLS/IV



23MB606A01, IV BLS/IV



Abrienna 23MB606A01

COLORS

- Ivory gown with Ivory Illusion
- Ivory over Blush gown with Ivory Illusion

HIGHLIGHTS

- Allover beaded tulle
- Illusion front bodice
- Deep V-neckline
- Plunging V-back
- Beaded spaghetti straps
- Lined with Rosario crepe back satin
- Zipper closure
- Horsehair hem finish
- Detachable Rosario crepe back satin full bodice lining included

SIZES: 0-28

MISCELLANEOUS

- Photographed with light nude bra cups, dark nude available separately

MISCELLANEOUS PERSONALIZATION

Extend the train for added drama (up to 24 in/61 cm), opt to shorten the train (up to 12 in/30 cm) or remove the train for a more casual look through special request

Amber 23MB625A01

MAGGIE SOTTERO®

personalize it!
FOR YOUR LOVE STORY



23MB625A01, IV LTTE/NAT



23MB625A01, IV LTTE/NAT
Size 6



23MB625A01, IV LTTE/NAT



23MB625A01, IV LTTE/NAT



23MB625A01, IV LTTE/NAT



23MB625A01, IV LTTE/NAT
Size 6

Amber 23MB625A01

COLORS

- Ivory gown with Natural Illusion
- Ivory over Latte gown with Natural Illusion

HIGHLIGHTS

- Unembellished floral Jacquard
- Pleated front bodice
- Plunging illusion V-neckline
- Lined with Rosario crepe back satin
- Covered button over zipper and inner elastic closure
- Pockets

SIZES: 0-28

SISTER STYLES

- Available in an unembellished diamond Jacquard (Amber Marie, 23MB625B01)

MISCELLANEOUS PERSONALIZATION

Extend the train for added drama (up to 12 in/30 cm), opt to shorten the train (up to 12 in/30 cm) or remove the train for a more casual look through special request

Add covered buttons down the back for a vintage vibe

Amber Marie 23MB625A02

MAGGIE SOTTERO®

personalize it!
FOR YOUR LOVE STORY





Amber Marie 23MB625A02

COLORS

- Ivory gown with Natural Illusion

HIGHLIGHTS

- Unembellished diamond Jacquard
- Pleated front bodice
- Plunging illusion V-neckline
- Lined with Rosario crepe back satin
- Covered button over zipper and inner elastic closure
- Pockets

SIZES: 0-28

SISTER STYLES

- Available in an unembellished floral Jacquard (Amber, 23MB625A01)

MISCELLANEOUS PERSONALIZATION

Extend the train for added drama (up to 12 in/30 cm), opt to shorten the train (up to 12 in/30 cm) or remove the train for a more casual look through special request

Add covered buttons down the back for a vintage vibe

Anniston Lane 23MS618A01

MAGGIE SOTTERO®

personalize it!
FOR YOUR LOVE STORY





Anniston Lane 23MS618A01

COLORS

- Champagne (A01 only)
- Ivory (A03 only)

HIGHLIGHTS

- Glitter tulle
- Asymmetrical ruched bodice
- Strapless sweetheart neckline
- Zipper with inner elastic closure and covered buttons trailing to the hem

SIZES: 0-28

ACCESSORIES

- Detachable glitter off-the-shoulder cap-sleeves sold separately (Anniston, CSA23MS040000)
- Ruffle tulle overskirt with sparkle horsehair hem finish sold separately (Timbrey, OS021MC391000)

SISTER STYLES

- Available with a pleated A-line skirt (Anniston, 23MS040)

PERSONALIZATION OPTIONS

23MS618A01
(Glitter tulle, Champagne)

23MS618A03
(Glitter tulle, Ivory)

ACCESSORIES

CSA23MS040000 (Anniston)
(Cap-sleeves, Champagne)

CSC23MS040000 (Anniston)
(Cap-sleeves, Ivory)

OS021MC391000 (Timbrey)
(Overskirt)

MISCELLANEOUS PERSONALIZATION

Extend the train for added drama (up to 12 in/30 cm), opt to shorten the train (up to 12 in/30 cm) or remove the train for a more casual look through special request

Betsy 23MB694A01

MAGGIE SOTTERO®

personalize it!
FOR YOUR LOVE STORY





23MB694A01, IV BLS/NAT
Size 6



23MB694A01, IV BLS/NAT



23MB694A01, IV BLS/NAT

Betsy 23MB694A01

COLORS

- Ivory gown with Natural Illusion
- Ivory over Blush gown with Natural Illusion

HIGHLIGHTS

- Pearl accented tulle over patterned glitter tulle
- Front sweetheart lined bodice
- Plunging illusion V-neckline
- Plunging illusion V-back with exposed boning detail
- Beaded spaghetti straps
- Lined with Rosario crepe back satin
- Covered button over zipper closure
- Extended illusion pearl train

SIZES: 0-28

PERSONALIZATION OPTIONS

23MB694A01
(Patterned glitter tulle)

23MB694A02
(Chic organza)

MISCELLANEOUS PERSONALIZATION

Extend the train for added drama (up to 12 in/30 cm), opt to shorten the train (up to 12 in/30 cm) or remove the train for a more casual look through special request

Add covered buttons down the back for a vintage vibe

Bodie 23MW607A01

MAGGIE SOTTERO®

personalize it!
FOR YOUR LOVE STORY



MAGGIE SOTTERO
THIS GOWN IS MADE WITH LUXE
JERSEY LINING
Designed for a
comfortable fit that is
ultra-lightweight

23MW607A01, IV/NAT
Size 6



23MW607A01, IV/NAT



23MW607A01, IV/NAT



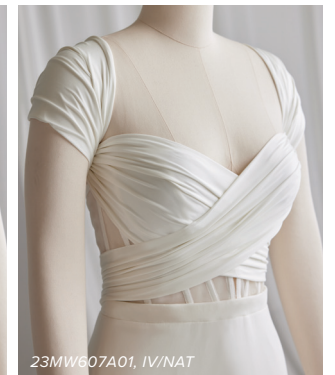
23MW607A01, IV/NAT



23MW607A01, IV/NAT



23MW607A01, IV/NAT



23MW607A01, IV/NAT



Bodie 23MW607A01

COLORS

- Ivory gown with Natural Center Front Illusion

HIGHLIGHTS

- Luscious stretch jersey
- Exposed boning corset wrapped with Luscious stretch jersey
- Plunging illusion sweetheart neckline
- Lined with Brisa stretch jersey for comfort
- Zipper closure
- Long Luscious stretch jersey streamers used for a customizable look

SIZES: 0-28

MISCELLANEOUS

- Photographed with light nude bra cups, dark nude available separately

MISCELLANEOUS PERSONALIZATION

Opt to shorten the train (up to 24 in/61 cm) or remove the train for a more casual look through special request



Brannagh 23MS720A01

MAGGIE SOTTERO®

personalize it!
FOR YOUR LOVE STORY



23MS720A01, IV/NAT



23MS720A01, IV/NAT



23MS720A01, IV/NAT



23MS720A01, IV/NAT

23MS720A01, IV/NAT
Size 6



23MS720A01, IV/NAT
Size 6



23MS720A01, IV/NAT



23MS720A01, IV/NAT

Brannagh 23MS720A01

COLORS

- Ivory gown with Natural Illusion

HIGHLIGHTS

- Unembellished floral overlace
- Yolivia crepe bodice
- Plunging illusion V-neckline
- Deep V-back
- Yolivia crepe tank straps
- Covered button over zipper closure
- Attached Yolivia crepe belt
- Side slit
- Illusion tulle side insets

SIZES: 0-28

MISCELLANEOUS PERSONALIZATION

Remove the train for a more casual look through special request

Add covered buttons down the back for a vintage vibe

Calianna 23MW685A01

MAGGIE SOTTERO®

personalize it!
FOR YOUR LOVE STORY





23MW685A01, IV
Size 6

Calianna 23MW685A01

COLORS

- All Ivory

HIGHLIGHTS

- Talin stretch crepe
- Deep V-neckline
- Deep V-back
- Talin stretch crepe tank straps
- Lined with Brisa stretch jersey for comfort
- Covered button over zipper closure
- Tiered Precious organza skirt

SIZES: 0-28

MISCELLANEOUS PERSONALIZATION

Opt to shorten the train (up to 24 in/61 cm) or remove the train for a more casual look through special request



23MW685A01, IV



23MW685A01, IV



23MW685A01, IV



23MW685A01, IV

Chelsea 23MS683A01

MAGGIE SOTTERO®

personalize it!
FOR YOUR LOVE STORY





23MS683A01, IV BLS/NAT
Size 6



23MS683A12, IV BLS/NAT
Long sleeves: DSC23MS683000, IV/IV



23MS683A01, IV BLS/NAT



23MS683A01, IV/IV

Chelsea 23MS683A01

COLORS

- All Ivory gown with Ivory Illusion
- Ivory over Blush gown with Natural Illusion

HIGHLIGHTS

- Sequin and glitter lace motifs over patterned glitter tulle
- Deep illusion strapless sweetheart neckline
- Covered button over zipper closure
- Tulle pockets
- Side slit with hidden mini skirt for coverage

SIZES: 0-28

ACCESSORIES

- Detachable off-the-shoulder illusion sequin and glitter lace long bishop sleeves with covered button closure at the wrist sold separately
- Detachable off-the-shoulder unembellished illusion lace long bishop sleeves with covered button closure at the wrist sold separately

PERSONALIZATION OPTIONS

23MS683A01 <i>(Patterned glitter tulle, embellished)</i>
23MS683A02 <i>(Plain tulle, embellished)</i>
23MS683A11 <i>(Patterned glitter tulle, unembellished)</i>
23MS683A12 <i>(Plain tulle, unembellished)</i>

ACCESSORIES

DSB23MS683000 <i>(Long Sleeves, embellished)</i>
DSC23MS683000 <i>(Long Sleeves, unembellished)</i>

MISCELLANEOUS PERSONALIZATION

Extend the train for added drama (up to 12 in/30 cm) or remove the train for a more casual look through special request
Add covered buttons down the back for a vintage vibe

Claire 23MK605A01

MAGGIE SOTTERO®

personalize it!
FOR YOUR LOVE STORY





Claire 23MK605A01

COLORS

- All Ivory gown with Ivory Illusion
- Ivory over Blush gown with Ivory Illusion

HIGHLIGHTS

- Sequined lace motifs over tulle
- Sheer lace bodice lined with organza
- Illusion halter neckline
- Illusion lace back
- Illusion lace tank straps
- Lined with Drema stretch lining for comfort
- Covered button over zipper closure
- Extended scalloped illusion lace train

SIZES: 0-28

ACCESSORIES

- Long fitted illusion lace sleeves embellished with sequins sold separately
- Long fitted illusion unembellished lace sleeves sold separately

MISCELLANEOUS

- Photographed with light nude bra cups, dark nude available separately

PERSONALIZATION OPTIONS

23MK605A01 <i>(Unlined bodice, embellished)</i>
23MK605A11 <i>(Unlined bodice, unembellished)</i>
23MK605B01 <i>(Lined bodice, embellished)</i>
23MK605B11 <i>(Lined bodice, unembellished)</i>

ACCESSORIES

DS023MK605000 <i>(Sleeves, embellished)</i>
DSA23MK605000 <i>(Sleeves, unembellished)</i>

MISCELLANEOUS PERSONALIZATION

Remove the train for a more casual look through special request

Add covered buttons down the back for a vintage vibe

Darcy 23MB711A01

MAGGIE SOTTERO®

personalize it!
FOR YOUR LOVE STORY



MAGGIE SOTTERO
THIS GOWN IS MADE WITH LUXE
JERSEY LINING
Designed for a
comfortable fit that is
ultra-lightweight





Darcy 23MB711A01

COLORS

- All Ivory

HIGHLIGHTS

- Talin stretch crepe
- Unembellished lace motifs accent the side bodice
- Asymmetrical pleated sweetheart neckline
- Plunging V-back with pleated keyhole detail
- Talin stretch crepe spaghetti straps
- Lined with Virtue stretch jersey for comfort
- Covered button over zipper closure
- Lace illusion train

SIZES: 0-28

PERSONALIZATION OPTIONS

23MB711A01
(Unembellished)

23MB711A11
(Embellished)

MISCELLANEOUS PERSONALIZATION

Extend the train for added drama (up to 12 in/30 cm) or remove the train for a more casual look through special request

Add covered buttons down the back for a vintage vibe

Derrick 23MS723A01

MAGGIE SOTTERO®

personalize it!
FOR YOUR LOVE STORY





Derrick 23MS723A01

COLORS

- Ivory gown with Natural Illusion

HIGHLIGHTS

- Mago satin
- Exposed boning detail with soft basque waist
- Plunging illusion V-neckline
- Zipper with inner elastic closure and covered buttons trailing to the hem
- Pockets

SIZES: 0-28

ACCESSORIES

- Detachable off-the-shoulder Celia organza cap-sleeves sold separately

ACCESSORIES

CS023MS723000
(Cap-sleeves)

MISCELLANEOUS PERSONALIZATION

Extend the train for added drama (up to 12 in/31 cm) or remove the train for a more casual look through special request

Drew 23MB724A01

MAGGIE SOTTERO®

personalize it!
FOR YOUR LOVE STORY





23MB724A01, IV BLS/IV
Jacket: JK023MB724000, IV/IV
Size 6



Drew 23MB724A01

COLORS

- Ivory gown with Ivory Illusion
- Ivory over Blush gown with Ivory Illusion

HIGHLIGHTS

- Beaded tulle over Aurora glitter tulle
- Ruched illusion bodice with corset detailing
- Strapless scoop neckline
- Lined with Rosario crepe back satin
- Zipper with covered buttons trailing to the hem

SIZES: 0-28

ACCESSORIES

- Beaded off the shoulder illusion tulle jacket sold separately

ACCESSORIES

JK023MB724000
(Jacket)

MISCELLANEOUS PERSONALIZATION

Opt to shorten the train (up to 24 in/61 cm) or remove the train for a more casual look through special request

Edwina 23MS617A01

MAGGIE SOTTERO®

personalize it!
FOR YOUR LOVE STORY





Edwina 23MS617A01

COLORS

- All Ivory gown with Ivory Illusion
- Ivory over Misty Mauve gown with Natural Illusion
- Ivory over Blush gown with Natural Illusion

HIGHLIGHTS

- Sequin lace motifs over sparkle tulle
- Sheer organza lined bodice
- Plunging V-neckline
- Deep sheer organza lined back bodice
- Beaded spaghetti straps
- Covered button over zipper closure

SIZES: 0-28

ACCESSORIES

- Detachable illusion sequin lace long sleeves with covered button closure at the wrist sold separately
- Detachable unembellished illusion lace long sleeves with covered button closure at the wrist sold separately

MISCELLANEOUS

- Extra lace motif included for minor neckline alterations
- Photographed with light nude bra cups, dark nude available separately

PERSONALIZATION OPTIONS

23MS617A01
(Sparkle tulle, embellished)

23MS617A02
(Plain tulle, embellished)

23MS617A11
(Sparkle tulle, unembellished)

23MS617A12
(Plain tulle, unembellished)

ACCESSORIES

DS023MS617000
(Sleeves, embellished)

DSA23MS617000
(Sleeves, unembellished)

MISCELLANEOUS PERSONALIZATION

Opt to shorten the train (up to 12 in/30 cm) or remove the train for a more casual look through special request

Add covered buttons down the back for a vintage vibe

Ernestine 23MS681A01

MAGGIE SOTTERO®

personalize it!
FOR YOUR LOVE STORY





23MS681A01, IV SBLS/NAT



23MS681A01

IV/IV
Size 18

IV SBLS/NAT

IV MMV/IV
Size 12



23MS681A01, IV SBLS/NAT
Size 6

Ernestine 23MS681A01

COLORS

- All Ivory gown with Ivory Illusion
- Ivory over Soft Blush gown with Natural Illusion
- Ivory over Misty Mauve gown with Ivory Illusion

HIGHLIGHTS

- Beaded asymmetric lace motifs over sparkle tulle
- Sheer organza lined bodice
- Plunging illusion V-neckline
- Plunging V-back
- Beaded pearl spaghetti straps
- Lined with Virtue stretch jersey for comfort
- Covered button over zipper closure
- Double horsehair hem finish

SIZES: 0-28

MISCELLANEOUS

- Extra lace motif included for minor neckline alterations
- Photographed with light nude bra cups, dark nude available separately

PERSONALIZATION OPTIONS

23MS681A01
(Unlined bodice, sparkle tulle 1)

23MS681B01
(Lined bodice, sparkle tulle 1)

MISCELLANEOUS PERSONALIZATION

Extend the train for added drama (up to 12 in/30 cm), opt to shorten the train (up to 12 in/30 cm) or remove the train for a more casual look through special request

Add covered buttons down the back for a vintage vibe

Gwen 23MB707A01

MAGGIE SOTTERO®

personalize it!
FOR YOUR LOVE STORY



23MB707A01, IV BLS/NAT
Size 6



23MB707A01, IV BLS/NAT



23MB707A01, IV BLS/NAT



23MB707A01, IV BLS/NAT



23MB707A01, IV BLS/NAT



23MB707A01, IV BLS/NAT
Size 6

Gwen 23MB707A01

COLORS

- All Ivory gown with Ivory Illusion
- Ivory over Blush gown with Natural Illusion

HIGHLIGHTS

- Beaded 3-D lace motifs over tulle
- Illusion pleated bodice with exposed boning detail
- Strapless sweetheart neckline
- Lined with Rosario crepe back satin
- Zipper closure
- Side slit

SIZES: 0-28

MISCELLANEOUS

- Photographed with nude bra cups, dark nude available separately

MISCELLANEOUS PERSONALIZATION

Extend the train for added drama (up to 12 in/30 cm) or remove the train for a more casual look through special request

Hailey 23MS653A01

MAGGIE SOTTERO®

personalize it!
FOR YOUR LOVE STORY





Hailey 23MS653A01

COLORS

- All Ivory gown with Ivory Illusion
- Ivory/Pewter Accent gown with Natural Illusion
- Ivory over Misty Mauve gown with Ivory Illusion

HIGHLIGHTS

- Sequin lace motifs over glitter tulle
- Sheer organza lined bodice
- Strapless plunging illusion V-neckline
- Lined with Drema stretch lining for comfort
- Covered button over zipper closure

SIZES: 0-28

ACCESSORIES

- Detachable off-the-shoulder ruched glitter tulle cap-sleeves sold separately

MISCELLANEOUS

- Extra lace motif included for minor neckline alterations
- Photographed with light nude bra cups, and featured on our curve model with dark nude bra cups, available separately

PERSONALIZATION OPTIONS

23MS653A01 <i>(Unlined bodice)</i>
23MS653B01 <i>(Lined bodice)</i>

ACCESSORIES

CS023MS653000 <i>(Cap-sleeves)</i>

MISCELLANEOUS PERSONALIZATION

Opt to shorten the train (up to 12 in/30 cm) or remove the train for a more casual look through special request
Add covered buttons down the back for a vintage vibe

Harlem Leigh 22MS513C01

MAGGIE SOTTERO®

personalize it!
FOR YOUR LOVE STORY



MAGGIE SOTTERO
THIS GOWN IS MADE WITH LUXE
JERSEY LINING
Designed for a
comfortable fit that is
ultra-lightweight

22MS513C01, IV BLS
Size 6



22MS513C01, IV BLS
Size 6



23MS054 (Harlem Lane), IV BLS/NAT
Veil (Harlem): VL023MS054000, IV
Size 6



22MS513C01, IV BLS



22MS513C01, IV BLS



22MS513C01, IV BLS
Size 6



22MS513C01, IV BLS



23MS054 (Harlem Lane), IV BLS/NAT
Veil (Harlem): VL023MS054000, IV
Size 6



22MS513C01, IV BLS
Size 6

Harlem Leigh 22MS513C01

COLORS

- All Ivory
- Ivory over Misty Mauve
- Ivory over Blush

HIGHLIGHTS

- Lace motifs with sequins over tulle
- Exposed boning corset detailing
- Modest square neckline
- Modest square back
- Modest cap-sleeves
- Lined with Virtue stretch jersey for comfort
- Covered button over zipper closure

SIZES: 0-28

ACCESSORIES

- Cathedral wedding veil edged in sequined lace motifs sold separately (Harlem, VL023MS054000) *Veil measures 120 inch (305 cm)

SISTER STYLES

- Available with a strapless sweetheart neckline with off-the-shoulder cap-sleeves (Harlem, 22MT513)
- Available with a strapless sweetheart neckline and fit and flare skirt (Harlem Lane, 23MS054)

ACCESSORIES

VL023MS054000 (Harlem)
(Veil)

MISCELLANEOUS PERSONALIZATION

Opt to shorten the train (up to 12 in/30 cm) or remove the train for a more casual look through special request

Add covered buttons down the back for a vintage vibe

Havana 23MK665A01

MAGGIE SOTTERO®

personalize it!
FOR YOUR LOVE STORY





23MK665A01, IV/IV
Sleeves: DS023MK665000, IV/IV



23MK665A01, IV/IV



23MK665A01, IV/PL/NAF
Size 12



23MK665A01, IV/IV
Size 6

Havana 23MK665A01

COLORS

- All Ivory gown with Ivory Illusion
- Ivory over Pearl gown with Natural Illusion

HIGHLIGHTS

- Unembellished allover lace
- Illusion bodice with corset detailing
- V-neckline
- Beaded spaghetti straps
- Covered button over zipper closure

SIZES: 0-28

ACCESSORIES

- Detachable off-the-shoulder all over lace elbow length puff sleeves sold separately

MISCELLANEOUS

- Photographed with light nude bra cups, dark nude available separately

ACCESSORIES

DS023MK665000
(Sleeves)

MISCELLANEOUS PERSONALIZATION

Remove the train for a more casual look through special request

Add covered buttons down the back for a vintage vibe

Indiana 23MS616A01

MAGGIE SOTTERO®

personalize it!
FOR YOUR LOVE STORY



23MS616A01, IV CH/NAT



23MS616A01, IV CH/NAT
Cap-sleeves: CS023MS616Q00, IV/IV



23MS616A02
IV/IV

23MS616A01
IV CH/NAT

23MS616A01, IV CH/NAT
Size 6



Indiana 23MS616A01

COLORS

- Ivory over Champagne gown with Natural Illusion (A01 only)
- All Ivory gown with Ivory Illusion (A02 only)

HIGHLIGHTS

- Sequin lace motifs over sparkle tulle
- Sheer organza lined front bodice
- Deep illusion V-neckline
- Illusion lace back bodice
- Covered button over zipper closure
- Ruffle tulle skirt with horsehair hem finish
- Sheer lace train

SIZES: 0-28

ACCESSORIES

- Detachable off-the-shoulder sequin lace cap-sleeves sold separately

MISCELLANEOUS

- Extra lace motif included for minor neckline alterations
- Photographed with light nude bra cups, dark nude available separately

PERSONALIZATION OPTIONS

23MS616A01
(Sparkle tulle, Champagne)

23MS616A02
(Sparkle tulle, Ivory)

ACCESSORIES

CS023MS616000
(Cap-sleeves)

MISCELLANEOUS PERSONALIZATION

Remove the train for a more casual look through special request

Add covered buttons down the back for a vintage vibe

Jodie 23MK654A01

MAGGIE SOTTERO®

personalize it!
FOR YOUR LOVE STORY





23MK654A11, IV/IV



23MK654A11, IV/IV



23MK654A01, IV SND/NAT



23MK654A01, IV SND/NAT
Size 6

Jodie 23MK654A01

COLORS

- All Ivory gown with Ivory Illusion
- Ivory over Soft Nude gown with Natural Illusion

HIGHLIGHTS

- Beaded lace motifs over tulle
- Illusion beaded lace bodice with sparkle tulle
- Deep V-neckline
- Illusion lace V-back
- Illusion lace tank straps
- Covered button over zipper closure
- Extended illusion lace train

SIZES: 0-28

MISCELLANEOUS

- Photographed with light nude bra cups, dark nude available separately

PERSONALIZATION OPTIONS

23MK654A01
(Sleeveless, plain tulle skirt)

23MK654A02
(Sleeveless, sparkle tulle 1 skirt)

23MK654A11
(Long sleeves, plain tulle skirt)

23MK654A12
(Long sleeves, sparkle tulle 1 skirt)

MISCELLANEOUS PERSONALIZATION

Remove the train for a more casual look through special request

Add covered buttons down the back for a vintage vibe

Jordan 23MB660A01

MAGGIE SOTTERO®

personalize it!
FOR YOUR LOVE STORY





Jordan 23MB660A01

COLORS

- All Ivory gown with Ivory Illusion
- Ivory over Blush gown with Natural Illusion

HIGHLIGHTS

- Beaded sequin overlace over Chantilly lace
- Lined front sweetheart bodice and illusion lace back
- Plunging illusion V-neckline
- Plunging illusion V-back
- Illusion sequin tank straps
- Lined with Rosario crepe back satin
- Covered button over zipper closure
- Detachable beaded sequin belt included

SIZES: 0-28

ACCESSORIES

- Detachable beaded sequin overlace train sold separately

MISCELLANEOUS

- Photographed with light nude bra cups, dark nude available separately

ACCESSORIES

DT023MB660000
(Train)

MISCELLANEOUS PERSONALIZATION

Remove the train for a more casual look through special request

Add covered buttons down the back for a vintage vibe

Kimberly 23MC673A01

MAGGIE SOTTERO®

personalize it!
FOR YOUR LOVE STORY





Kimberly 23MC673A01

COLORS

- All Ivory gown with Ivory Illusion

HIGHLIGHTS

- Unembellished lace motifs over glitter tulle
- Modest V-neckline
- Modest scoop back
- Fitted long illusion lace sleeves over modest cap-sleeve finished with covered buttons at the wrist
- Lined with Wynn stretch jersey for comfort
- Zipper closure
- Finished with hem lace

SIZES: 0-28

MISCELLANEOUS PERSONALIZATION

Extend the train for added drama (up to 12 in/30 cm) or remove the train for a more casual look through special request

Ladonna 23MB608A01

MAGGIE SOTTERO®

personalize it!
FOR YOUR LOVE STORY





Ladonna 23MB608A01

COLORS

- Ivory gown with Natural Illusion
- Ivory over Blush gown with Natural Illusion

HIGHLIGHTS

- Unembellished allover 3-D lace
- Illusion 3-D lace bodice with exposed boning detail
- Deep V-neckline
- Plunging V-back
- Lace spaghetti straps
- Lined with Rosario crepe back satin
- Covered button over zipper closure
- Horsehair hem finish
- Extended illusion lace train

SIZES: 0-28

ACCESSORIES

- Fingertip length veil embellished with pearls sold separately *Veil measures 46 inches (117 cm)
- Fingertip length veil embellished with lace motifs sold separately *Veil measures 46 inches (117 cm)

MISCELLANEOUS

- Photographed with light nude bra cups, dark nude available separately

ACCESSORIES

VLA23MB608000
(Fingertip veil, pearls)

VLB23MB608000
(Fingertip veil, lace)

MISCELLANEOUS PERSONALIZATION

Extend the train for added drama (up to 24 in/61 cm) or remove the train for a more casual look through special request

Add covered buttons down the back for a vintage vibe

Lindsey 23MN651A01

MAGGIE SOTTERO®

personalize it!
FOR YOUR LOVE STORY



23MB608A01, IV SLV BLS/NAT
Size 6



23MB608A01, IV SLV/NAT
Size 18



23MB608A01, IV SLV BLS/NAT



23MB608A01, IV SLV BLS/NAT



23MB608A01, IV SLV BLS/NAT
Size 6



23MB608A01, IV SLV BLS/NAT



23MB608A01, IV SLV BLS/NAT



23MB608A01, IV SLV BLS/NAT

Lindsey 23MN651A01

COLORS

- Ivory/Silver Accent gown with Natural Illusion
- Ivory/Silver Accent over Blush gown with Natural Illusion
- Ivory/Silver Accent over Mocha gown with Natural Illusion

HIGHLIGHTS

- Beaded lace motifs over tulle
- Illusion bodice accented with beaded lace
- Illusion bateau neckline
- Illusion lace back
- Illusion tulle tank straps
- Covered button over zipper closure

SIZES: 0-28

MISCELLANEOUS

- Photographed with light nude bra cups, and featured on our curve model with dark nude bra cups, available separately

MISCELLANEOUS PERSONALIZATION

Opt to shorten the train (up to 24 in/61 cm) or remove the train for a more casual look through special request

Add covered buttons down the back for a vintage vibe

Marlena 23MB662A01

MAGGIE SOTTERO®

personalize it!
FOR YOUR LOVE STORY





Marlena 23MB662A01

COLORS

- All Ivory gown with Ivory Illusion
- Ivory over Blush gown with Natural Illusion

HIGHLIGHTS

- Sequin 3-D lace motifs over sparkle tulle
- Illusion 3-D lace bodice
- Plunging V-neckline
- Plunging illusion V-back
- Illusion lace tank straps
- Lined with Lotus stretch jersey for comfort
- Covered button over zipper closure
- Extended illusion lace train

SIZES: 0-28

ACCESSORIES

- Detachable sequin lace bishop sleeves sold separately
- Detachable unembellished lace bishop sleeves sold separately

MISCELLANEOUS

- Extra lace motif included for minor neckline alterations
- Photographed with light nude bra cups, dark nude available separately

PERSONALIZATION OPTIONS

23MB662A01 <i>(Unlined bodice, sparkle tulle, embellished)</i>
23MB662A02 <i>(Unlined bodice, plain tulle, embellished)</i>
23MB662A11 <i>(Unlined bodice, sparkle tulle, unembellished)</i>
23MB662A12 <i>(Unlined bodice, plain tulle, unembellished)</i>
23MB662B01 <i>(Lined bodice, sparkle tulle, embellished)</i>
23MB662B02 <i>(Lined bodice, plain tulle, embellished)</i>
23MB662B11 <i>(Lined bodice, sparkle tulle, unembellished)</i>
23MB662B12 <i>(Lined bodice, plain tulle, unembellished)</i>

ACCESSORIES

DS023MB662000 <i>(Sleeves, embellished)</i>
DSA23MB662000 <i>(Sleeves, unembellished)</i>

MISCELLANEOUS PERSONALIZATION

Extend the train for added drama (up to 12 in/30 cm) or remove the train for a more casual look through special request

Add covered buttons down the back for a vintage vibe

Maurelle 23MS650A01

MAGGIE SOTTERO®

personalize it!
FOR YOUR LOVE STORY





Maurelle 23MS650A01

COLORS

- All Ivory gown with Ivory Illusion
- Ivory gown with Natural Illusion

HIGHLIGHTS

- Aurora chiffon
- Illusion front bodice accented with beaded lace
- Deep illusion V-neckline
- Plunging illusion square back
- Beaded illusion tank straps
- Covered button over zipper closure
- Side slit

SIZES: 0-28

MISCELLANEOUS

- Photographed with light nude bra cups, dark nude available separately

MISCELLANEOUS PERSONALIZATION

Extend the train for added drama (up to 12 in/30 cm) or remove the train for a more casual look through special request

Add covered buttons down the back for a vintage vibe

Nolan 23MS644A01

MAGGIE SOTTERO®

personalize it!
FOR YOUR LOVE STORY





Nolan 23MS644A01

COLORS

- Champagne gown with Natural Illusion (A01 only)
- All Ivory gown with Ivory Illusion (A03 only)

HIGHLIGHTS

- Glitter tulle
- Exposed boning bodice detail
- Square front neckline
- Deep square back neckline
- Tank straps
- Zipper with covered buttons trailing to the hem
- Attached glitter tulle belt
- Pleated skirt with side slit
- Pockets

SIZES: 0-28

PERSONALIZATION OPTIONS

23MS644A01
(Glitter tulle, Champagne)

23MS644A03
(Glitter tulle, Ivory)

MISCELLANEOUS PERSONALIZATION

Remove the train for a more casual look through special request

Ophelia 23MS614A01

MAGGIE SOTTERO®

personalize it!
FOR YOUR LOVE STORY





Ophelia 23MS614A01

COLORS

- All Ivory

HIGHLIGHTS

- Mago satin
- Asymmetrical pleated bodice
- Soft scoop neckline
- Lined with Royal satin
- Zipper with inner elastic closure and covered buttons trailing to the hem
- Pockets
- Attached Mago satin bow included
- Detachable Mago satin spaghetti straps included

SIZES: 0-28

MISCELLANEOUS PERSONALIZATION

Extend the train for added drama (up to 12 in/30 cm) or remove the train for a more casual look through special request

Pauline 23MW633A01

MAGGIE SOTTERO®

personalize it!
FOR YOUR LOVE STORY





Pauline 23MW633A01

COLORS

- Ivory gown with Natural Illusion

HIGHLIGHTS

- Felicity Mikado
- Sheer organza lined bodice with beaded lace motifs
- Deep illusion sweetheart neckline
- Beaded spaghetti straps that are detachable in back for customizable fit
- Zipper with covered buttons trailing to the hem

SIZES: 0-28

ACCESSORIES

- Detachable beaded lace illusion long sleeves sold separately

MISCELLANEOUS

- Extra lace motif included for minor neckline alterations
- Photographed with light nude bra cups, dark nude available separately

ACCESSORIES

DS023MW633000
(Sleeves)

MISCELLANEOUS PERSONALIZATION

Extend the train for added drama (up to 12 in/30 cm), opt to shorten the train (up to 12 in/30 cm) or remove the train for a more casual look through special request

Penny 23MB716A01

MAGGIE SOTTERO®

personalize it!
FOR YOUR LOVE STORY



23MB716A01, IV BLS/NAT



23MB716A01, BLK/BLK
Cap-sleeves: CS023MB716000, BLK/BLK
Size 6



23MB716A01, IV BLS/NAT



23MB716A01, IV BLS/NAT



23MB716A01, IV BLS/NAT
Cap-sleeves: CS023MB716000, IV/IV



Penny 23MB716A01

COLORS

- All Ivory gown with Ivory Illusion
- Ivory over Blush gown with Natural Illusion
- All Black gown with Black Illusion

HIGHLIGHTS

- Unembellished all over cut out chiffon lace
- Deep illusion sweetheart neckline
- Lined with Rosario crepe back satin
- Covered button over zipper and inner elastic closure

SIZES: 0-28

ACCESSORIES

- Detachable unembellished all over cut out chiffon lace cap-sleeves sold separately

ACCESSORIES

CS023MB716000
(Cap-sleeves)

MISCELLANEOUS PERSONALIZATION

Opt to shorten the train (up to 24 in/61 cm) or remove the train for a more casual look through special request

Add covered buttons down the back for a vintage vibe

Quincy 23MS675A01

MAGGIE SOTTERO®

personalize it!
FOR YOUR LOVE STORY





23MS675A01, IV/IV



23MS675A01, IV/IV
Size 6



23MS675A01, IV/IV
Size 6

Quincy 23MS675A01

COLORS

- All Ivory gown with Ivory Illusion

HIGHLIGHTS

- Eva crepe
- Beaded embroidery with 3-D flowers
- Modest square neckline
- Modest square back
- Modest puffed Celia organza short sleeves with 3-D flowers
- Lined with Virtue stretch jersey for comfort
- Zipper with covered buttons trailing to the hem
- Detachable inner modest cap sleeve lining included

SIZES: 0-28

MISCELLANEOUS PERSONALIZATION

Extend the train for added drama (up to 12 in/30 cm) or remove the train for a more casual look through special request

Rayna 23MB661A01

MAGGIE SOTTERO®

personalize it!
FOR YOUR LOVE STORY





Rayna 23MB661A01

COLORS

- All Ivory gown with Ivory Illusion
- Ivory over Blush gown with Natural Illusion

HIGHLIGHTS

- Unembellished lace motifs over sparkle tulle
- Illusion lace bodice
- Plunging front V-neckline with crisscross illusion detail
- Plunging illusion V-back
- Beaded spaghetti straps
- Lined with Rosario crepe back satin
- Covered button over zipper closure
- Extended illusion lace train

SIZES: 0-28

ACCESSORIES

- Fingertip length veil accented with lace motifs sold separately *Veil measures 46 inches (117 cm)

MISCELLANEOUS

- Extra lace motif included for minor neckline alterations
- Photographed with light nude bra cups, dark nude available separately

PERSONALIZATION OPTIONS

23MB661A01
(Unlined bodice, sparkle tulle)

23MB661A02
(Unlined bodice, plain tulle)

23MB661B01
(Lined bodice, sparkle tulle)

23MB661B02
(Lined bodice, plain tulle)

ACCESSORIES

VL023MB661000
(Fingertip veil)

MISCELLANEOUS PERSONALIZATION

Extend the train for added drama (up to 12 in/30 cm) or remove the train for a more casual look through special request

Add covered buttons down the back for a vintage vibe

Starling 23MB624A01

MAGGIE SOTTERO®

personalize it!
FOR YOUR LOVE STORY





Starling 23MB624A01

COLORS

- All Ivory
- Ivory over Latte

HIGHLIGHTS

- Beaded lace motifs over texture sparkle tulle
- Exposed boning bodice detail
- Soft scoop front neckline
- Deep V-back
- Spaghetti straps
- Lined with Rosario crepe back satin
- Covered button over zipper closure

SIZES: 0-28

PERSONALIZATION OPTIONS

23MB624A01
(Texture tulle 3)

23MB624A02
(Plain tulle)

MISCELLANEOUS PERSONALIZATION

Extend the train for added drama (up to 12 in/30 cm) or remove the train for a more casual look through special request

Add covered buttons down the back for a vintage vibe

Taryn 23MC604A01

MAGGIE SOTTERO®

personalize it!
FOR YOUR LOVE STORY





Taryn 23MC604A01

COLORS

- All Ivory
- Oyster
- Black

HIGHLIGHTS

- Delustered satin
- Strapless straight neckline
- Lace-up closure
- Asymmetrical ruffle skirt

SIZES: 0-28

ACCESSORIES

- Off-the-shoulder wrap with ruched plain tulle sold separately
*Train measures 110 inches (279 cm)
- Off-the-shoulder wrap with ruched pearl tulle sold separately
*Train measures 110 inches (279 cm)
- Off-the-shoulder wrap with ruched sparkle tulle sold separately
*Train measures 110 inches (279 cm)

PERSONALIZATION OPTIONS

- | |
|-------------------------|
| 23MC604A01
(Lace-up) |
| 23MC604B01
(Zipper) |

ACCESSORIES

- | |
|---|
| SWA23MC604000
(Shoulder wrap, plain tulle) |
| SWB23MC604000
(Shoulder wrap, pearl tulle) |
| SWC23MC604000
(Shoulder wrap, sparkle tulle) |

MISCELLANEOUS PERSONALIZATION

- | |
|---|
| Extend the train for added drama (up to 12 in/30 cm), or opt to shorten the train (up to 24 in/61 cm) |
|---|

Teona 23MN602A01

MAGGIE SOTTERO®

personalize it!
FOR YOUR LOVE STORY



23MN602A01, IV SBLS/NAT



IV/IV
Size 12
23MN602A01

IV SBLS/NAT



23MN602A01, IV SBLS/NAT



23MN602A01, IV SBLS/NAT
Size 6



23MN602A01, IV SBLS/NAT
Size 6



23MN602A01, IV SBLS/NAT
Size 18



23MN602A01, IV SBLS/NAT



23MN602A01, IV SBLS/NAT

Teona 23MN602A01

COLORS

- All Ivory gown with Ivory Illusion
- Ivory over Soft Blush gown with Natural Illusion

HIGHLIGHTS

- Lace motifs over sparkle tulle
- Ruched tulle bodice lined with organza
- Deep V-neckline
- V-back
- Illusion tulle tank straps
- Covered button over zipper closure

SIZES: 0-28

MISCELLANEOUS

- Photographed with light nude bra cups, and featured on our curve model with dark nude bra cups, available separately

MISCELLANEOUS PERSONALIZATION

Opt to shorten the train (up to 36 in/91 cm) or remove the train for a more casual look through special request

Add covered buttons down the back for a vintage vibe

Trezelle 23MW603A01

MAGGIE SOTTERO®

personalize it!
FOR YOUR LOVE STORY





23MW603A01, IV/NAT
Size 6



23MW603A01, IV/NAT



23MW603A01, IV/NAT

Trezelle 23MW603A01

COLORS

- Ivory gown with Natural Illusion

HIGHLIGHTS

- Talin stretch crepe
- Bodice accented with sequin lace motifs
- Deep V-neckline
- Open illusion keyhole back
- Lace tank straps lined with Talin stretch crepe
- Lined with Brisa stretch jersey for comfort
- Covered button over zipper closure
- Scalloped illusion lace cut-out train

SIZES: 0-28

PERSONALIZATION OPTIONS

23MW603A01
(Extended train)

23MW603A11
(Short train)

MISCELLANEOUS PERSONALIZATION

Remove the train for a more casual look through special request

NEW!

Danielle Lane 23MT048C01
(A-line)

MAGGIE SOTTERO®

personalize it!
FOR YOUR LOVE STORY





Danielle Lane 23MT048C01

COLORS

- All Ivory gown with Ivory Illusion
- Ivory over Soft Blush gown with Natural Illusion
- Ivory over Pearl gown with Natural Illusion
- Ivory over Mocha gown with Natural Illusion

HIGHLIGHTS

- Lace motifs accented with sequins over sparkle tulle
- Sheer organza lined bodice with corset detailing
- Lined with Roma satin
- Covered button over zipper closure

SIZES: 0–28

ACCESSORIES

- Detachable off-the-shoulder ruched tulle and lace cap-sleeves sold separately (Danielle)
- Long fitted illusion lace sleeve armbands sold separately (Danielle)
- Cathedral length tulle veil edged with lace motifs sold separately (Danielle) *Veil measures 120 inch (305 cm)

MISCELLANEOUS

- Extra lace motif included for minor neckline alterations
- Photographed with light nude bra cups, dark nude available separately

SISTER STYLES

- Available as a fit-and-flare silhouette (Danielle, 23MT048A01)

PERSONALIZATION OPTIONS

23MT048C01 <i>(Unlined bodice, sparkle tulle 1)</i>
23MT048C02 <i>(Unlined bodice, change sparkle tulle 1 to plain tulle)</i>
23MT048C11 <i>(Unlined bodice, added hem lace, sparkle tulle 1)</i>
23MT048C12 <i>(Unlined bodice, added hem lace, change sparkle tulle 1 to plain tulle)</i>
23MT048D01 <i>(Lined bodice, sparkle tulle 1)</i>
23MT048D02 <i>(Lined bodice, change sparkle tulle 1 to plain tulle)</i>
23MT048D11 <i>(Lined bodice, added hem lace, sparkle tulle 1)</i>
23MT048D12 <i>(Lined bodice, added hem lace, change sparkle tulle 1 to plain tulle)</i>

ACCESSORIES

CS023MT048000 (Danielle) <i>(Cap-sleeves)</i>
DS023MT048000 (Danielle) <i>(Long sleeve armbands)</i>
VL023MT048000 (Danielle) <i>(Cathedral veil)</i>

MISCELLANEOUS PERSONALIZATION

Opt to shorten the train (up to 12 in/30 cm)
Add covered buttons down the back for a vintage vibe

Fiona 21MS366A01
(Spaghetti straps, raised back neckline)

MAGGIE SOTTERO®

personalize it!
FOR YOUR LOVE STORY





Fiona 21MS366A01

COLORS

- All Ivory gown with Ivory illusion
- Ivory gown with Natural Illusion
- Antique Ivory gown with Natural Illusion
- Ivory over Blush gown with Natural Illusion
- Ivory over Vintage Mauve gown with Natural Illusion

HIGHLIGHTS

- Beaded lace motifs over glitter tulle
- Sheer bodice lined with organza
- Plunging illusion sweetheart neckline
- Scoop back
- Beaded spaghetti straps
- Covered button over zipper closure
- Scalloped illusion lace train

SIZES: 0-28

ACCESSORIES

- Detachable lace off-the-shoulder long sleeves sold separately
- **NEW!** Detachable train with lace motifs over glitter tulle sold separately
- **NEW!** Detachable train with lace motifs over sparkle tulle sold separately
- **NEW!** Detachable train with lace motifs over plain tulle sold separately
- **NEW!** Cathedral length veil embellished with lace motifs sold separately
*Veil measures 120 inches (305 cm)
- **NEW!** Royal length veil embellished with lace motifs sold separately
(Fiona Royale) *Veil measures 140 inches (355 cm)

MISCELLANEOUS

- Extra lace motif included for minor neckline alterations
- Photographed with light nude bra cups, dark nude available separately

SISTER STYLES

- Available with off-the-shoulder sleeves and lowered back neckline (Fiona Royale, 21MS714A01)

PERSONALIZATION OPTIONS

21MS366A01 (Glitter tulle 2)
21MS366A02 (Change glitter tulle 2 to sparkle tulle 1)
21MS366A03 (Change glitter tulle 2 to plain tulle)

ACCESSORIES

DS021MS366000 (Detachable long sleeves)
NEW! DTA23MS714000 (Detachable train, glitter tulle 2)
NEW! DTB23MS714000 (Detachable train, sparkle tulle 1)
NEW! DTC23MS714000 (Detachable train, plain tulle)
NEW! VLA23MS714000 (Cathedral veil)
NEW! VLB23MS714000 (Fiona Royale) (Royal veil)

MISCELLANEOUS PERSONALIZATION

Extend the train for added drama (up to 18 in/45 cm), opt to shorten the train (up to 12 in/30 cm) or remove the train for a more casual look through special request
Add covered buttons down the back for a vintage vibe

NEW!

Fiona Royale 23MS714A01

(Off-the-shoulder sleeves, 1" lowered back, exposed boning, more pointed train)

MAGGIE SOTTERO®

personalize it!
FOR YOUR LOVE STORY





Fiona Royale 23MS714A01

COLORS

- All Ivory gown with Ivory illusion
- Ivory gown with Natural Illusion
- Antique Ivory gown with Natural Illusion
- Ivory over Blush gown with Natural Illusion
- Ivory over Vintage Mauve gown with Natural Illusion

HIGHLIGHTS

- Beaded lace motifs over glitter tulle
- Sheer organza lined bodice with exposed boning detail
- Plunging illusion V-neckline
- Soft V-back
- Off-the-shoulder illusion lace cap-sleeves
- Covered button over zipper closure
- Scalloped illusion lace train

SIZES: 0–28

ACCESSORIES

- Detachable lace off-the-shoulder long sleeves sold separately (Fiona)
- **NEW!** Detachable train with lace motifs over glitter tulle sold separately (Fiona)
- **NEW!** Detachable train with lace motifs over sparkle tulle sold separately (Fiona)
- **NEW!** Detachable train with lace motifs over plain tulle sold separately (Fiona) *Personalization options available
- **NEW!** Cathedral length veil embellished with lace motifs sold separately (Fiona) *Veil measures 120 inches (305 cm)
- **NEW!** Royal length veil embellished with lace motifs sold separately *Veil measures 140 inches (355 cm)

MISCELLANEOUS

- Extra lace motif included for minor neckline alterations
- Photographed with light nude bra cups, dark nude available separately

SISTER STYLES

- Available with beaded spaghetti straps and a raised back neckline (Fiona, 21MS366)

PERSONALIZATION OPTIONS

- | |
|---------------------------------|
| 23MS714A01
(Glitter tulle 2) |
| 23MS714A02
(Sparkle tulle 1) |
| 23MS714A03
(Plain tulle) |

ACCESSORIES

- | |
|--|
| DS021MS366000 (Fiona)
(Detachable long sleeves) |
| NEW! DTA23MS714000 (Fiona)
(Detachable train, glitter tulle 2) |
| NEW! DTB23MS714000 (Fiona)
(Detachable train, sparkle tulle 1) |
| NEW! DTC23MS714000 (Fiona)
(Detachable train, plain tulle) |
| NEW! VLA23MS714000 (Fiona)
(Cathedral veil) |
| NEW! VLB23MS714000
(Royal veil) |

MISCELLANEOUS PERSONALIZATION

Extend the train for added drama (up to 12 in/30 cm), opt to shorten the train (up to 12 in/30 cm) or remove the train for a more casual look through special request

Add buttons down the back for a vintage vibe

Frederique 22MC516A01

(Lined back bodice, woven lining, shortened standard train, original beading, also available with additional beading along front and back neckline)

MAGGIE SOTTERO®

personalize it!
FOR YOUR LOVE STORY



22MC516A01, IV VMV/NAT
Size 6



22MC516A01, IV VMV/NAT
Detachable sleeves: DS022MC516000, IV



22MC516B01 (Frederique Royale), IV VMV/NAT
Cathedral veil: VLA22MC516000, IV



22MC516A01, IV VMV/NAT
Size 6

MAGGIE SOTTERO®

MID-SEASON DROP: **NEW!** *styles & personalization*



22MC516A01, IV VMV/NAT
Size 6



22MC516B01 (Frederique Royale), IV VMV/NAT
Shoulder straps: SS022MC516000, IV



22MC516B01 (Frederique Royale), IV VMV/NAT
Cathedral veil: VLA22MC516000, VL



22MC516A11, IV VMV/NAT

Frederique 22MC516A01

COLORS

- Ivory gown with Natural Illusion
- Ivory over Misty Mauve gown with Natural Illusion (pictured)
- Ivory over Mocha gown with Natural Illusion

HIGHLIGHTS

- Beaded lace motifs over glitter tulle
- Deep illusion strapless sweetheart neckline
- Scoop back
- Strapless
- Covered buttons over zipper closure
- Horsehair hem finish

SIZES: 0–28

ACCESSORIES

- Detachable off-the-shoulder beaded lace cap-sleeves
- Detachable scalloped lace bridal train extension
- **NEW!** Detachable long sleeves with sequined lace motifs and puffed detail
- **NEW!** Detachable beaded spaghetti straps
- **NEW!** Cathedral length veil accented with beaded lace motifs
*Veil measures 120 inches (305 cm)

MISCELLANEOUS

- Extra lace motif included for minor neckline alterations

SISTER STYLES

- Also available with an illusion back bodice, Virtue stretch jersey lining for comfort, and a scalloped illusion lace train (Frederique Royale, 22MC516B01)

PERSONALIZATION OPTIONS

22MC516A01 (Glitter tulle 3)
22MC516A02 (Change glitter tulle to Chantilly lace 2 with sequin)
22MC516A03 (Change glitter tulle to texture tulle 1)
NEW! 22MC516A11 (Additional beading along the front and back neckline, glitter tulle 3)
NEW! 22MC516A12 (Additional beading along the front and back neckline, change glitter tulle to Chantilly lace 2 with sequin)
NEW! 22MC516A13 (Additional beading along the front and back neckline, change glitter tulle to texture tulle 1)

ACCESSORIES

CS022MC516000 (Cap-sleeves)
TE022MC516000 (Train extension)
NEW! DS022MC516000 (Detachable sleeves)
NEW! SS022MC516000 (1/4" straps)
NEW! VLA22MC516000 (Cathedral veil)

MISCELLANEOUS PERSONALIZATION

Extend the train for added drama (up to 15 in/38 cm), opt to shorten the train (up to 20 in/51 cm) or remove the train for a more casual look

Add buttons down the back for a vintage vibe

NEW!

Frederique Royale 22MC516B01

(Illusion back bodice, Virtue stretch jersey lining, scalloped illusion lace train, original beading, also available with additional beading along the front and back neckline)

MAGGIE SOTTERO®

personalize it!
FOR YOUR LOVE STORY





Frederique Royale 22MC516B01

COLORS

- Ivory gown with Natural Illusion
- Ivory over Misty Mauve gown with Natural Illusion
- Ivory over Mocha gown with Natural Illusion

HIGHLIGHTS

- Beaded lace motifs over glitter tulle
- Deep illusion strapless sweetheart neckline
- Plunging illusion back
- Lined in Virtue stretch jersey for comfort
- Covered buttons over zipper closure
- Illusion lace train with scalloped hem

SIZES: 0–28

ACCESSORIES

- Detachable off-the-shoulder beaded lace cap-sleeves (Frederique)
- Detachable scalloped lace bridal train extension (Frederique)
- **NEW!** Detachable long sleeves with sequined lace motifs and puffed detail (Frederique) **Not shown*
- **NEW!** Detachable beaded spaghetti straps (Frederique)
- **NEW!** Cathedral length veil accented with beaded lace motifs (Frederique) **Veil measures 120 inches (305 cm)*

MISCELLANEOUS

- Extra lace motif included for minor neckline alterations

SISTER STYLES

- Also available with lined back bodice, shortened standard train, and woven lining (Frederique, 22MC516A01)

PERSONALIZATION OPTIONS

22MC516B01 <i>(Original beading, glitter tulle 3)</i>
22MC516B02 <i>(Original beading, change glitter tulle to Chantilly lace 2 with sequin)</i>
22MC516B03 <i>(Original beading, change glitter tulle to texture tulle 1)</i>
22MC516B11 <i>(Additional beading along the front and back neckline, glitter tulle 3)</i>
22MC516B12 <i>(Additional beading along the front and back neckline, change glitter tulle to Chantilly lace 2 with sequin)</i>
22MC516B13 <i>(Additional beading along the front and back neckline, change glitter tulle to texture tulle 1)</i>

ACCESSORIES

CS022MC516000 (Frederique) <i>(Cap-sleeves)</i>
TE022MC516000 (Frederique) <i>(Train extension)</i>
NEW! DS022MC516000 (Frederique) <i>(Detachable sleeves)</i>
NEW! SS022MC516000 (Frederique) <i>(1/4" straps)</i>
NEW! VLA22MC516000 (Frederique) <i>(Cathedral veil)</i>

MISCELLANEOUS PERSONALIZATION

Extend the train for added drama (up to 12 in/30 cm), opt to shorten the train (up to 12 in/30 cm)
Add buttons down the back for a vintage vibe

Keisha 23MB065A01

MAGGIE SOTTERO®

personalize it!
FOR YOUR LOVE STORY





Keisha 23MB065A01

COLORS

- All Ivory gown with Ivory Illusion
- Ivory gown with Natural Illusion
- Ivory over Blush gown with Natural Illusion (pictured)

HIGHLIGHTS

- Unembellished allover lace over sparkle tulle
- Illusion lace bodice
- Deep illusion V-neckline
- Illusion lace deep V-back
- Beaded spaghetti straps
- Lined with Rosario crepe back satin
- Covered button over zipper closure
- Horsehair hem finish
- Extended illusion lace train

SIZES: 0-28

MISCELLANEOUS

- Extra lace motif included for minor neckline alterations
- Photographed with bra cups, dark nude available separately

PERSONALIZATION OPTIONS

23MB065A01 <i>(Sparkle tulle)</i>
23MB065A02 <i>(Change sparkle tulle to plain tulle)</i>
NEW! 23MB065B01 <i>(Lined bodice, sparkle tulle)</i>
NEW! 23MB065B02 <i>(Lined bodice, change sparkle tulle to plain tulle)</i>

MISCELLANEOUS PERSONALIZATION

- | |
|---|
| Remove the train for a more casual look through special request |
| Add covered buttons down the back for a vintage vibe |

Lennon 22MC913A01

MAGGIE SOTTERO®

personalize it!
FOR YOUR LOVE STORY

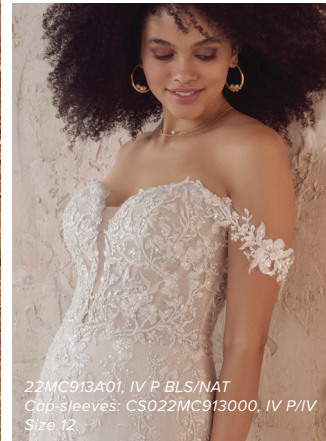




22MC913A01, IV P BLS/NAT
Cap-sleeves: CS022MC913000, IV P/IV
Cathedral veil: VL022MC913000
Size 6



22MC913B01, IV P BLS/NAT
Size 6



22MC913A01, IV P BLS/NAT
Cap-sleeves: CS022MC913000, IV P/IV
Size 12



22MC913A01, IV P BLS/NAT
Size 6

Lennon 22MC913A01

COLORS

- All Ivory gown with Ivory Illusion
- Ivory/Pewter Accent over Blush gown with Natural Illusion

HIGHLIGHTS

- Beaded lace motifs over glitter tulle
- Sheer bodice with beaded lace motifs lined with organza
- Plunging illusion sweetheart neckline with square finish at waist
- Sheer scoop back
- Covered buttons over zipper closure

SIZES: 0-28

ACCESSORIES

- Detachable cap-sleeves with beaded lace sold separately
- Cathedral veil adorned with beaded lace motifs sold separately
**Veil measures 120 inch (305 cm)*

MISCELLANEOUS

- Extra lace motif included for minor neckline alterations
- Photographed with bra cups, dark nude available separately

PERSONALIZATION OPTIONS

22MC913A01 <i>(Plunging illusion neckline)</i>
22MC913B01 <i>(Raised front neckline)</i>
NEW! 22MC913A02 <i>(Plunging neckline, change from glitter tulle to plain tulle)</i>
NEW! 22MC913B02 <i>(Raised front neckline, change from glitter tulle to plain tulle)</i>

ACCESSORIES

CS022MC913000 <i>(Cap-sleeves)</i>
VL022MC913000 <i>(Veil)</i>

MISCELLANEOUS PERSONALIZATION

Remove the train for a more casual look through special request
Add buttons down the back for a vintage vibe

NEW!

Scarlet Lane 23MW689A01
(Fit-and-flare)

MAGGIE SOTTERO®

personalize it!
FOR YOUR LOVE STORY





Scarlet Lane 23MW689A01

COLORS

- All Diamond White
- All Red
- All Black

HIGHLIGHTS

- Nouvelle stretch satin
- Ruched Nouvelle stretch satin bodice
- Soft scoop neckline
- V-back
- Nouvelle stretch satin spaghetti straps
- Zipper closure with covered buttons trailing down the hem

SIZES: 0-28

MISCELLANEOUS

- Extra lace motif included for minor neckline alterations
- Photographed with bra cups, dark nude available separately

SISTER STYLES

- Also available with a pleated A-line skirt (Scarlet, 22MW971A01)

PERSONALIZATION OPTIONS

23MW689A01

MISCELLANEOUS PERSONALIZATION

Opt to shorten the train (up to 24 in/61 cm) or remove the train for a more casual look through special request

NEW!

Selena Lane 20MS750A01
(Fit-and-flare)

MAGGIE SOTTERO®

personalize it!
FOR YOUR LOVE STORY





Selena Lane 20MS750A01

COLORS

- All White
- All Ivory

HIGHLIGHTS

- Huron Mikado
- Scoop neckline
- Square back neckline
- Huron Mikado tank straps
- Zipper closure with covered buttons trailing down the hem

SIZES: 0-28

SISTER STYLES

- Available as a ballgown silhouette (Selena, 20MT727)

PERSONALIZATION OPTIONS

20MS750A01

MISCELLANEOUS PERSONALIZATION

Extend the train for added drama (up to 24 in/61 cm) or remove the train for a more casual look through special request